

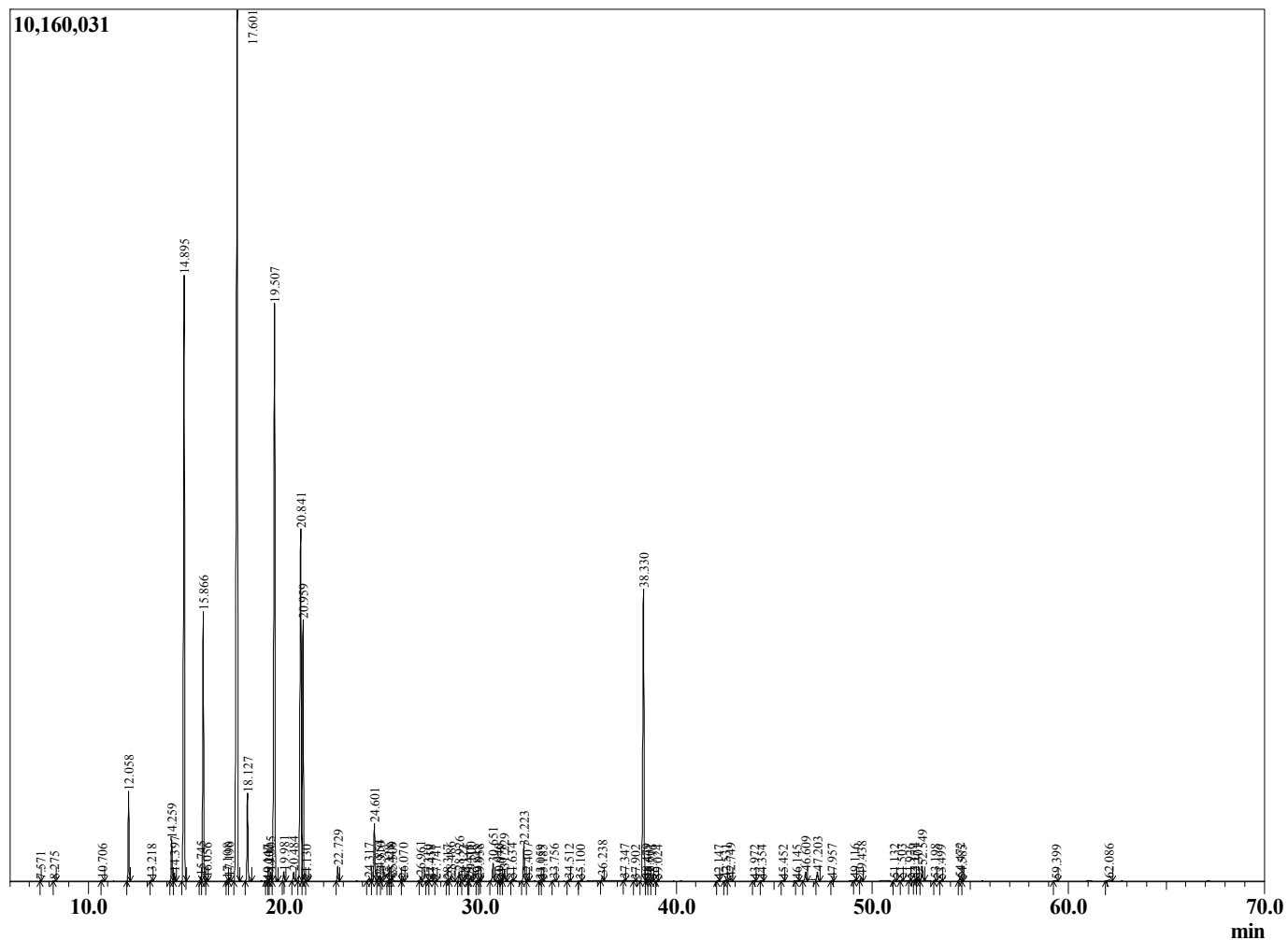
Sample Information

Sample Type : Essential Oil
 Sample Name : Abies balsamea



Fir Needle Balsam
 Lot# CAC12-CC
 Country: Canada

Chromatogram Abies balsamea



R.Time	Name	Area%
7.571	Toluene	0.01
8.275	Hexyl methyl ether	0.01
10.706	Hex-3(Z)-enol	0.03
12.058	Santene	1.69
13.218	Unidentified	0.03
14.259	Tricyclene	0.88
14.397	alpha-Thujene	0.18
14.895	alpha-Pinene	14.48
15.745	alpha-Fenchene	0.08
15.866	Camphene	5.83
16.056	Thuja-2,4(10)diene	0.04
17.108	Unidentified	0.04
17.190	Sabinene	0.09
17.601	beta-Pinene	26.44
18.127	Myrcene	1.94
19.147	Pseudolimonene	0.02
19.200	Unidentified	0.01
19.305	alpha-Phellandrene	0.23
19.507	delta-3-Carene	16.06
19.981	alpha-Terpinene	0.22
20.484	para-Cymene	0.23
20.841	Limonene	10.07
20.959	beta-Phellandrene	6.03
21.130	Unidentified	0.03
22.729	gamma-Terpinene	0.36
24.317	Isoterpinolene	0.07
24.601	Terpinolene	1.41
24.854	Fenchone	0.16
24.910	para-Cymenene	0.06
25.328	Unidentified	0.01
25.418	Unidentified	0.05
25.509	Linalool	0.12
26.070	alpha-Thujone	0.04
26.961	alpha-Fenchol	0.10
27.310	cis-para-Menth-2-en-1-ol	0.02
27.458	alpha-Campholenal	0.02
27.741	Unidentified	0.01
28.317	Nopinone	0.01
28.486	trans-Pinocarveol	0.12
28.926	Camphor	0.25
29.122	alpha-Phellandrene-8-ol	0.02
29.415	Unidentified	0.01
29.500	trans-beta-Terpineol	0.09
29.848	Pinocamphone	0.02
29.958	Pinocarvone	0.03
30.651	Borneol	0.48
30.940	Isopinocampnone	0.03
31.078	Unidentified	0.01
31.229	Terpinen-4-ol	0.30
31.634	Cryptone	0.04
32.223	alpha-Terpineol	0.97
32.407	Estragole	0.05
33.059	Verbenone	0.02
33.185	Unidentified	0.02
33.756	alpha-Fenchyl acetate	0.04
34.512	Thymol methyl ether	0.04

R.Time	Name	Area%
35.100	Unidentified	0.01
36.238	Piperitone	0.12
37.347	Isopulegyl acetate	0.01
37.902	Phellandral	0.02
38.330	Bornyl acetate	8.37
38.479	Isobornyl acetate	0.03
38.601	Thymol	0.04
38.776	2-Undecanone	0.02
39.024	Unidentified	0.01
42.147	Unidentified	0.01
42.531	Unidentified	0.04
42.749	alpha-Longipinene	0.07
43.972	Isoedene	0.02
44.354	Unidentified	0.02
45.452	Sativene	0.02
46.145	alpha-Gurjunene	0.03
46.609	Junipene	0.30
47.203	trans-beta-Caryophyllene	0.28
47.957	trans-alpha-Bergamotene	0.02
49.116	(E)-beta-Farnesene	0.03
49.438	alpha-Humulene	0.11
51.132	Unidentified	0.04
51.503	beta-Selinene	0.03
51.926	alpha-Selinene	0.02
52.174	beta-Himachalene	0.03
52.301	Unidentified	0.02
52.549	beta-Bisabolene	0.42
53.198	delta-Cadinene	0.02
53.499	7-epi-cis-sesquisabinene hydrate	0.01
54.472	trans-alpha-Bisabolene	0.07
54.585	Unidentified	0.01
59.399	Furanoedesma-1,3-diene	0.05
62.086	Unidentified	0.07
		100.00